



# GMT MONTHLY MEMBERSHIP PROGRESS REPORT

Results as of: 11/30/2017

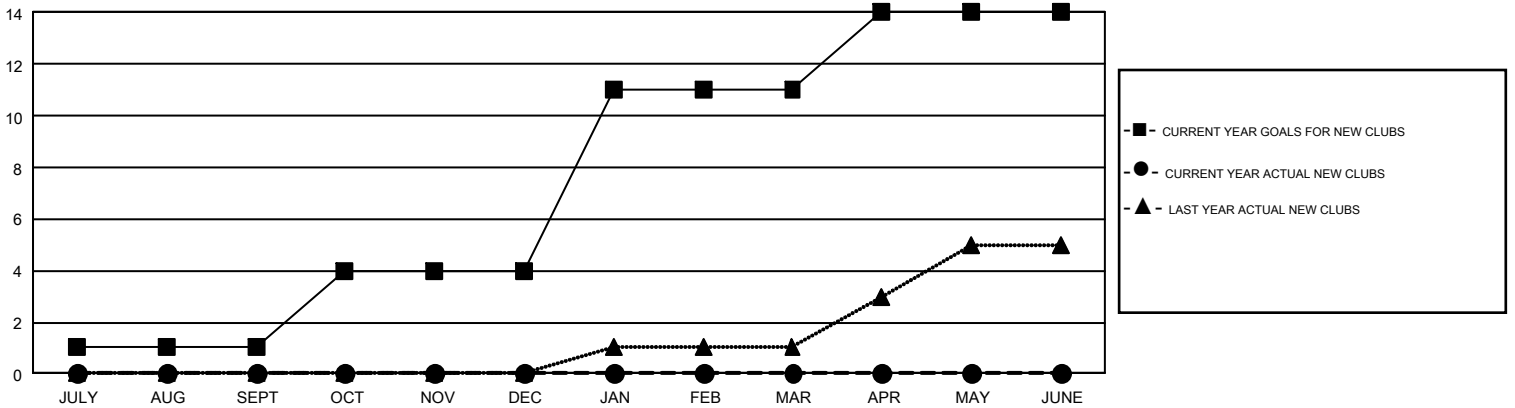
## GMT Constitutional Area 2, Group A

GMT: GORDON ZIEGLER

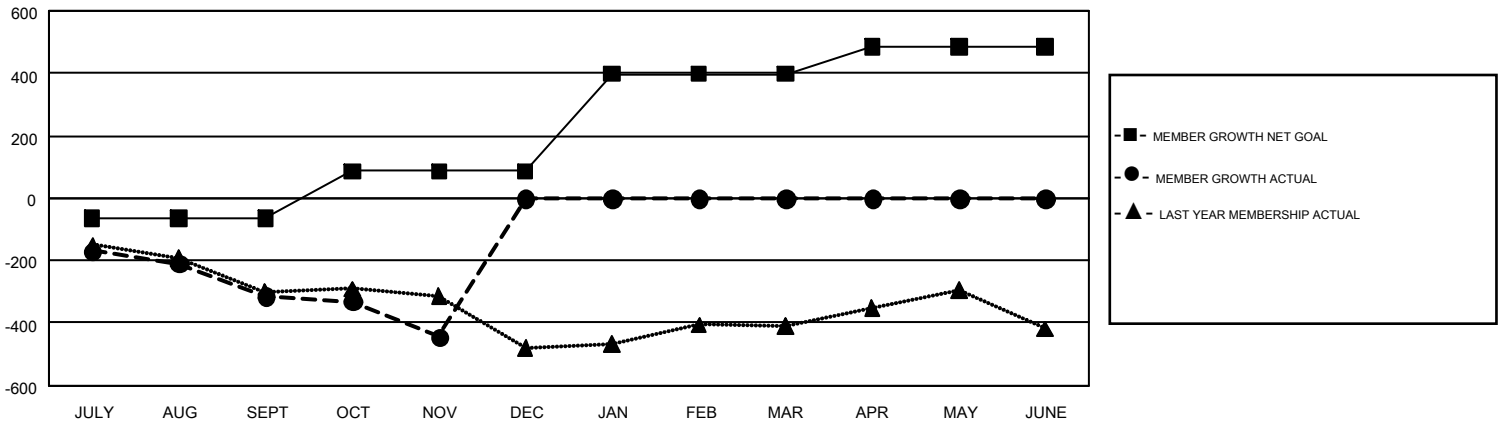
REPORT DOES NOT INCLUDE CLUBS IN UNDISTRICTED AREAS.

Clubs				Members			
RESULTS FOR 2017-2018				RESULTS FOR 2017-2018			
QUARTER	NEW CLUB GOAL	NEW CLUBS	DROPPED CLUBS	QUARTER	MEMBER GROWTH NET GOAL	MEMBER GROWTH ACTUAL	DROPPED MEMBERS ACTUAL (including transfers)
JULY/AUG/SEPT	1	0	5	JULY/AUG/SEPT	-65	306	566
OCT/NOV/DEC	3	0	1	OCT/NOV/DEC	152	333	425
JAN/FEB/MAR	7	0	0	JAN/FEB/MAR	311	0	0
APR/MAY/JUNE	3	0	0	APR/MAY/JUNE	86	0	0

GOALS AND ACTUAL NEW CLUBS CUMULATIVE



GOALS AND ACTUAL MEMBERS CUMULATIVE



DROPPED CLUBS: 6	229 CLUBS OF 697 ADDED 1 OR MORE NEW MEMBERS	<b>GENDER DISTRIBUTION</b> MALE 11,143 (67.87%) FEMALE 5,274 (32.13%)
<b>DROPPED MEMBERS</b> DECEASED 84 CLUB CANCELLED 22 OTHER 885 <b>TOTAL 991</b>	<a href="#">CLICK HERE FOR CUMULATIVE MEMBERSHIP DATA</a>	TOTAL FAMILY UNIT MEMBERS 3,081 FAMILY MEMBERS PAYING HALF DUES 1,568